



**SILVERCREST®**  
WESTERN HOMES CORPORATION

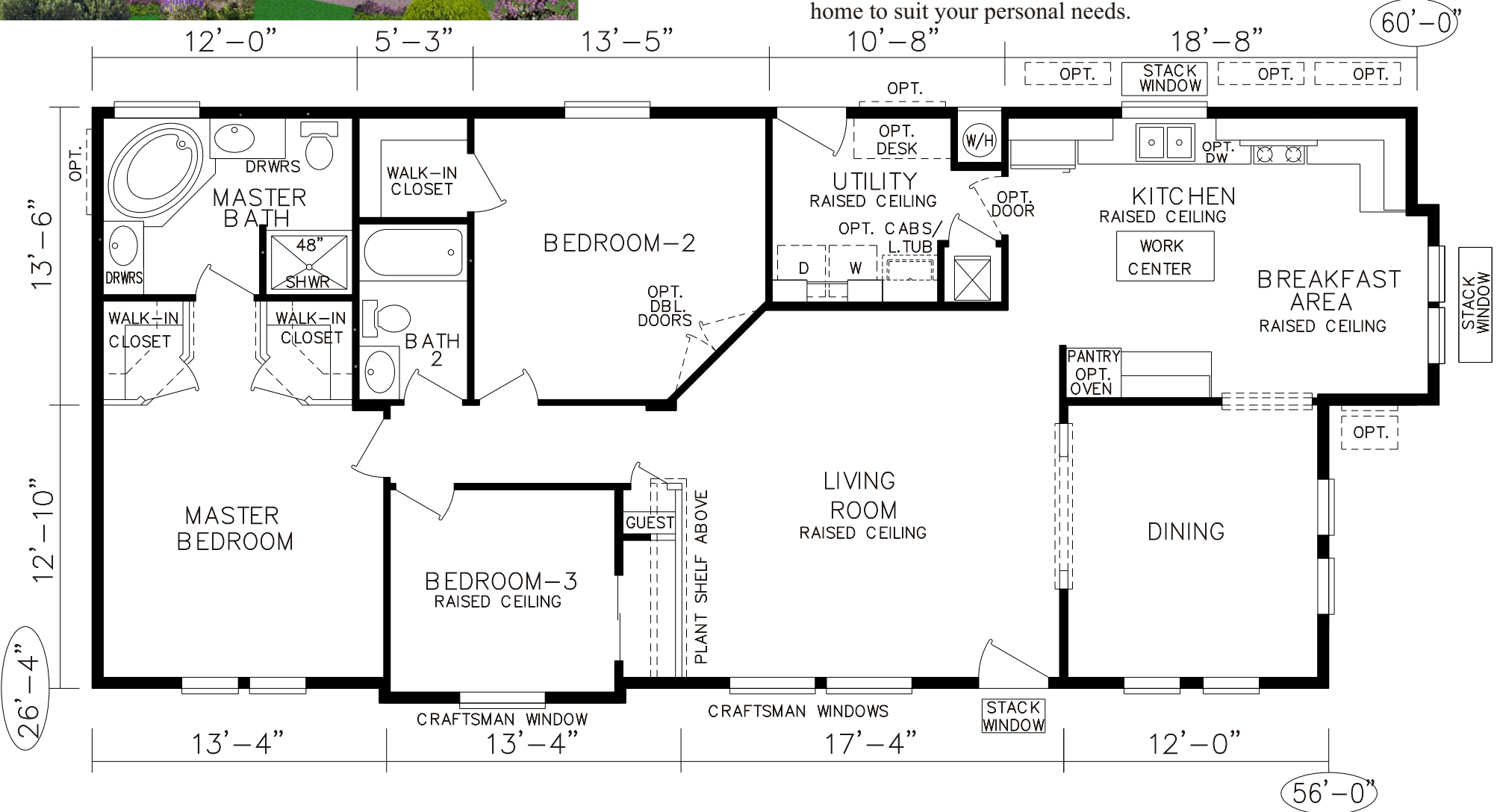
*Simply*  
BUILDS THE BEST

# Westwood WC-12

CRAFTSMAN SERIES

Approx. 1553 SQ. FT.

This beautiful Craftsman Style home features three Bedrooms and two Baths. Vaulted ceilings accented with raised volume ceilings in selected areas and architectural detailing are standard throughout the interior living spaces. Luxury, style and convenience define the Kitchen and Master Bath. Silvercrest's flexibility allows you to custom tailor this home to suit your personal needs.





WESTERN HOMES CORPORATION

299 North Smith Avenue • P.O. Box 759 • Corona, Ca. 92878-0759  
(909)734-6610 • (800)382-0709

Internet: <http://www.silvercrest.com> • e-mail: [info@silvercrest.com](mailto:info@silvercrest.com)

## Westwood Craftsman Features

### Construction

- ▲ Full 4/12 roof pitch with truss type rafters
- ▲ Nominal 3/12 roof pitch in raised ceiling areas
- ▲ 2x6 exterior wall framing, 16" on center with timber headers
- ▲ 2x6 transverse floor joists on 16" centers
- ▲ 90" sidewall height except in raised ceiling areas
- ▲ Vented attic
- ▲ 20 lb. roof load
- ▲ White vinyl framed dual glazed low-E2 windows with mullions
- ▲ "Craftsman" style windows in selected areas
- ▲ Baseboard moulding throughout
- ▲ Water shut-off valves at sinks and toilets
- ▲ 5/8" fire rated drywall ceilings
- ▲ Insulation values Zone II:  
Ceiling areas, R-33 Insulation  
Exterior walls, R-19 Fiberglass Insulation  
Floor, R-11 Fiberglass Insulation
- ▲ Insulation values Zone III:  
Floor, R-22 Fiberglass Insulation

### Exterior

- ▲ "Craftsman" style exterior featuring elevated roof line in accent area, "Craftsman" windows and gables with corbel accents
- ▲ Semi-gloss 2 or 3-color exterior
- ▲ Class "A" fire rated composition roofing, with 25 year manufacturers limited warranty
- ▲ White framed windows
- ▲ G.F.I. protected patio receptacles (2)
- ▲ 6-panel metal insulated entry door
- ▲ Cottage type rear door
- ▲ Full eave on front door side (26' wides only)
- ▲ Minimum eave on rear door side (on 13'6" floor)
- ▲ 16" overhang on front and rear

- ▲ Optional "Trex" Deck with railing (per plan)
- ▲ Optional covered Porch/Deck (Plan WC-13)

### Appliances

- ▲ Whirlpool "White on White" appliances: 30" gas freestanding range, digital clock, window, pilotless ignition; 16 cu. Ft. frost free refrigerator
- ▲ 30 gallon gas water heater
- ▲ Coleman gas downflow heating system (A/C ready)

### Utility

- ▲ 100 amp electrical service
- ▲ Plumbing for washer and gas dryer
- ▲ Overhead utility shelf

### Baths

- ▲ "Moen" faucets
- ▲ Corner tub with obscure tempered window (per plan)
- ▲ 48" stall shower with enclosure (per plan)
- ▲ 60" Tub/shower in Bath #2
- ▲ 3-Drawer bank - Master Bath
- ▲ 30" wide passage doors
- ▲ Toe kick heat registers in base cabinet
- ▲ Linen storage (per plan)
- ▲ Power exhaust fans both baths
- ▲ Medicine cabinet (Master Bath)

### General Interior

- ▲ Vaulted ceilings throughout
- ▲ Architectural plant shelves where indicated
- ▲ Finished 1/2" drywall throughout
- ▲ Hand textured knock down ceilings throughout
- ▲ Hollow core wardrobe doors
- ▲ Recessed can light in entry

- ▲ Group II carpet standard in all areas except Kitchen, Bath 1, Bath 2 & Utility
- ▲ 1/2" rebond carpet pad
- ▲ Easy clean 1-piece roll goods in Kitchen, Utility, Bath 1 & Bath 2
- ▲ Prehung Colonist passage doors with brass knob hardware and (3) mortised hinges
- ▲ Mini blinds all rooms (except baths) 3/4 coverage on Craftsman windows
- ▲ Gathered valences on all windows (except stacks and Bath #2)

### Kitchen

- ▲ Raised panel prefinished cabinet doors
- ▲ Solid end panel cabinet design
- ▲ Interior lined cabinetry and drawers on metal roller guides
- ▲ Stainless finish steel sink
- ▲ Drop edge Formica® countertops with backsplash
- ▲ Pantry closet or cabinet (most plans)
- ▲ Crown moulding accents overhead cabinets
- ▲ Moen faucets
- ▲ Toe kick heat register in base cabinet

### **"Smart Choice" Options**

- ▲ **Mettund D'mand hot water recirculation system (saves water and energy)**
- ▲ **All Steel Perimeter Framed "Super Floor"**
- ▲ **Sun Star Tubular Skylights (Saves Energy)**
- ▲ **Under Counter Water Filtration System in Kitchen**

*For More Information click "Smart Choice" button on home page*



### Manufacturer's Notes

Due to our continuing program of product improvement and federal code requirements, specifications and prices are subject to change without notice. Silvercrest Western Homes Corporation reserves the right to improve models without incorporating these changes in similar models produced at an earlier date. Dimensions shown and square footage are approximate. Consult factory for specific dimensional foundation plans. Illustrations are artist's concepts.