

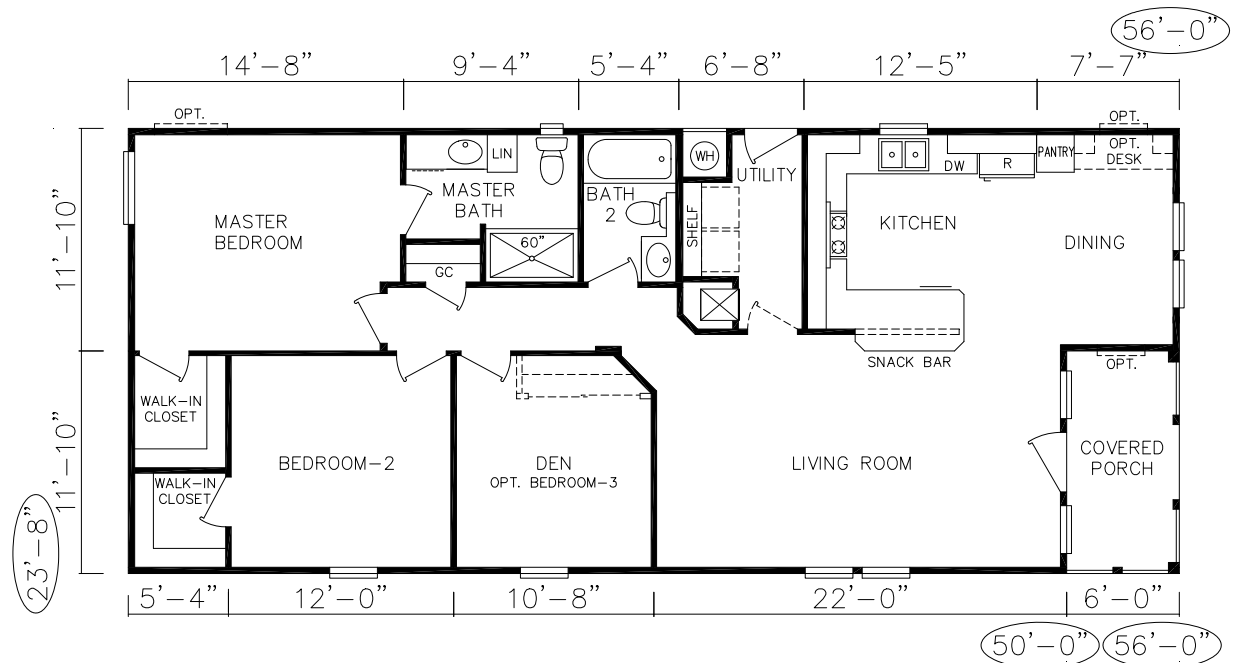


Exterior Rendering Representative. Actual Model May Not Be Shown.

STARCREST *Extreme*

ES-11

ES-11 Starcrest Extreme
 2 Bedroom, Den, 2 Bath
 1313.5 SQ. FT. Living Space
 82.5 SQ.FT Covered Porch
 Total 1396 SQ. FT.



STARCREST

Extreme

HIGH VALUED STANDARD FEATURE OFFERING INCLUDES:

Construction

- ✓ 3/12 Pitched Roof with Truss Type Rafters
- ✓ Vaulted Ceilings Starting With 7 ½' Sidewall Height
- ✓ 2x4 Framed Exterior Walls 16" OC With Timber Headers
- ✓ 2x6 Transverse Floor Joists on 16" Centers
- ✓ 20 lb. Roof Load
- ✓ 5/8" Fire Rated Drywall Ceilings
- ✓ Zone II Thermal Insulation Values R22 Ceiling, R11 Floors & Walls
- ✓ Built to Meet or Exceed H.U.D. Code Standards

Exterior

- ✓ Semi-Gloss Glidden™ 3-Color Exterior Paint Scheme
- ✓ Class "A" Fire Rated 20 Year Composition Roofing
- ✓ Cempanel™ Fiber-Cement Siding by James Hardie™
- ✓ White Vinyl Frame Dual Glazed Low-E Windows
- ✓ 6-Panel Metal Insulated Entry Door
- ✓ 9-Lite Window Metal Insulated Rear Door
- ✓ 16" Front Overhang, Optional Eaves and Rear Overhang



Woodland, California Division
109 Pioneer Avenue
Woodland, CA 95776
(530)662-9156

www.silvercrest.com

email: norcalinfo@silvercrest.com

Appliances

- ✓ White 30" Freestanding GE Gas Range
- ✓ 18 Cubic Foot GE Frost Free Refrigerator
- ✓ GE Dishwasher Installed
- ✓ Garbage Disposal Installed

Utilities

- ✓ Water Shutoff Valves at Sinks and Toilets
- ✓ Water Supply Lines Routed From Walls
- ✓ 30 Gallon Gas Water Heater
- ✓ 100 AMP Electrical Panel
- ✓ Flow Guard Gold™ Water Lines

Interior

- ✓ Vaulted Ceilings With Hand Textured Knockdown Finish
- ✓ Drywall Corners Rounded Except Windows
- ✓ 30" Interior Raised Panel Doors Where Possible
- ✓ Profiled Painted Door Trim & Casing
- ✓ Brushed Door Hardware
- ✓ Level 1 Carpeting by Shaw Floors
- ✓ Sculptured 3 ½" Baseboards Throughout

Kitchen & Baths

- ✓ Provincial Cherry Wrapped Cabinets With Fixed Shelving
- ✓ Laminate Counters With 4" Laminate Backsplash
- ✓ Master Crafted Dovetail Constructed Cabinet Drawers
- ✓ Deep Stainless Steel Kitchen Sink
- ✓ Moen Family Dual Control Sink Faucets With Lucite Handles
- ✓ Single Control Moen Family Bath Tub/Shower Value With Lucite Handle
- ✓ Through Wall Under Cabinet Plumbing With Steel Braided Lines
- ✓ Elongated Toilets Both Baths
- ✓ Banjo Counter With Oversize Mirror in Guest Bath
- ✓ Fiberglass Shower in Master Bath 60" or 48" Per Plan
- ✓ Fiberglass Tub/Shower in Guest Bath
- ✓ Self Rimming China Bath Sinks
- ✓ Mirrored Medicine Cabinets Both Baths
- ✓ Chrome Towel Bar & Tissue Holders Both Baths