

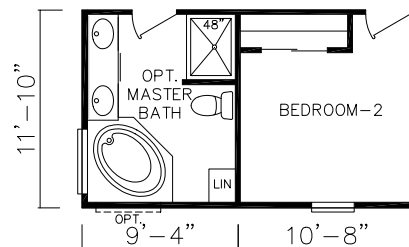
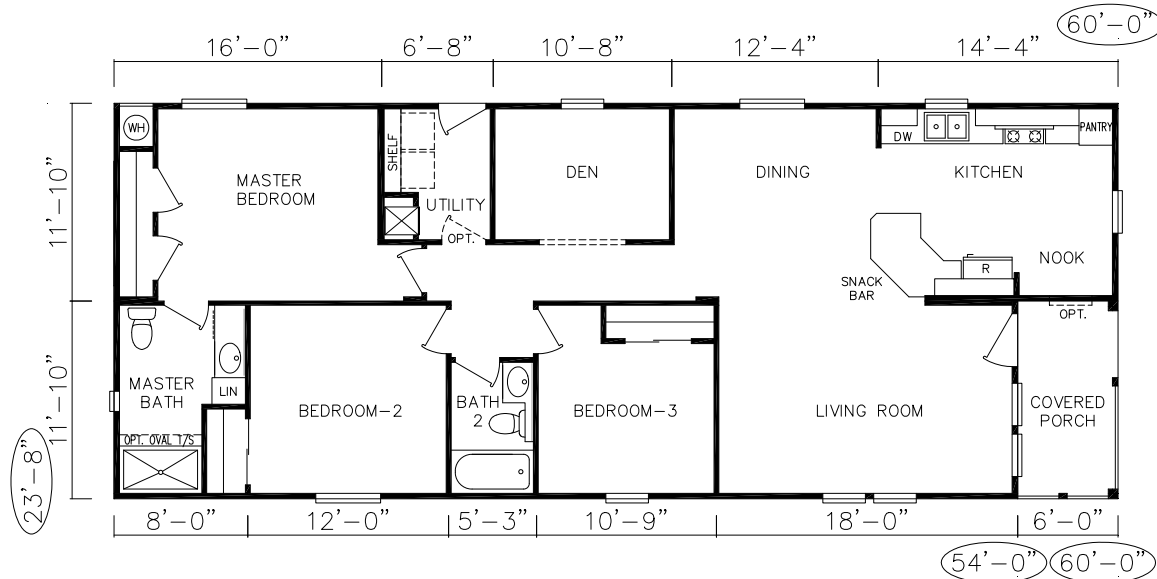


Exterior Rendering Representative. Actual Model May Not Be Shown.

# STARCREST *Extreme*

## ES-19

ES-19 Starcrest Extreme  
 3 Bedroom, Den, 2 Bath  
 1349 SQ. FT. Living Space  
 71 SQ. FT. Covered Porch  
 TOTAL 1420 SQ. FT.



Due to continuous product development and improvement, prices, specifications, and materials are subject to change without notice or obligation. Square footage and other dimensions are approximate. Included renderings are artist renderings and are not intended to be an accurate representation of the home. Renderings and floor plans may be shown with optional features and/or third-party additions that may not be available in all regions or situations. 1/12/09

# STARCREST

## Extreme

### HIGH VALUED STANDARD FEATURE OFFERING INCLUDES:

#### Construction

- ✓ 3/12 Pitched Roof with Truss Type Rafters
- ✓ Vaulted Ceilings Starting With 7 ½' Sidewall Height
- ✓ 2x4 Framed Exterior Walls 16" OC With Timber Headers
- ✓ 2x6 Transverse Floor Joists on 16" Centers
- ✓ 20 lb. Roof Load
- ✓ 5/8" Fire Rated Drywall Ceilings
- ✓ Zone II Thermal Insulation Values R22 Ceiling, R11 Floors & Walls
- ✓ Built to Meet or Exceed H.U.D. Code Standards

#### Exterior

- ✓ Semi-Gloss Glidden™ 3-Color Exterior Paint Scheme
- ✓ Class "A" Fire Rated 20 Year Composition Roofing
- ✓ Cempanel™ Fiber-Cement Siding by James Hardie™
- ✓ White Vinyl Frame Dual Glazed Low-E Windows
- ✓ 6-Panel Metal Insulated Entry Door
- ✓ 9-Lite Window Metal Insulated Rear Door
- ✓ 16" Front Overhang, Optional Eaves and Rear Overhang



Woodland, California Division  
109 Pioneer Avenue  
Woodland, CA 95776  
(530)662-9156

[www.silvercrest.com](http://www.silvercrest.com)

email: [norcalinfo@silvercrest.com](mailto:norcalinfo@silvercrest.com)

#### Appliances

- ✓ White 30" Freestanding GE Gas Range
- ✓ 18 Cubic Foot GE Frost Free Refrigerator
- ✓ GE Dishwasher Installed
- ✓ Garbage Disposal Installed

#### Utilities

- ✓ Water Shutoff Valves at Sinks and Toilets
- ✓ Water Supply Lines Routed From Walls
- ✓ 30 Gallon Gas Water Heater
- ✓ 100 AMP Electrical Panel
- ✓ Flow Guard Gold™ Water Lines

#### Interior

- ✓ Vaulted Ceilings With Hand Textured Knockdown Finish
- ✓ Drywall Corners Rounded Except Windows
- ✓ 30" Interior Raised Panel Doors Where Possible
- ✓ Profiled Painted Door Trim & Casing
- ✓ Brushed Door Hardware
- ✓ Level 1 Carpeting by Shaw Floors
- ✓ Sculptured 3 ½" Baseboards Throughout

#### Kitchen & Baths

- ✓ Provincial Cherry Wrapped Cabinets With Fixed Shelving
- ✓ Laminate Counters With 4" Laminate Backsplash
- ✓ Master Crafted Dovetail Constructed Cabinet Drawers
- ✓ Deep Stainless Steel Kitchen Sink
- ✓ Moen Family Dual Control Sink Faucets With Lucite Handles
- ✓ Single Control Moen Family Bath Tub/Shower Value With Lucite Handle
- ✓ Through Wall Under Cabinet Plumbing With Steel Braided Lines
- ✓ Elongated Toilets Both Baths
- ✓ Banjo Counter With Oversize Mirror in Guest Bath
- ✓ Fiberglass Shower in Master Bath 60" or 48" Per Plan
- ✓ Fiberglass Tub/Shower in Guest Bath
- ✓ Self Rimming China Bath Sinks
- ✓ Mirrored Medicine Cabinets Both Baths
- ✓ Chrome Towel Bar & Tissue Holders Both Baths