



Standard Exterior



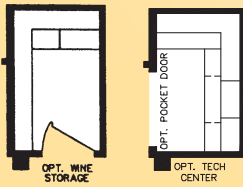
Optional Exterior

SW-31

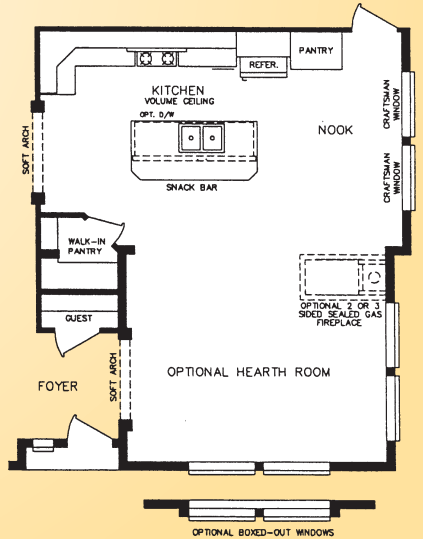
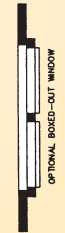
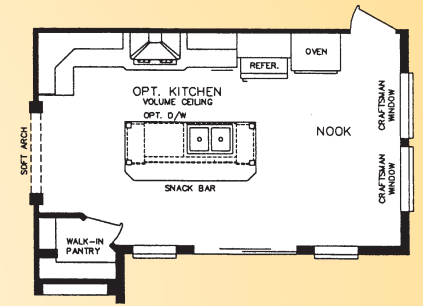
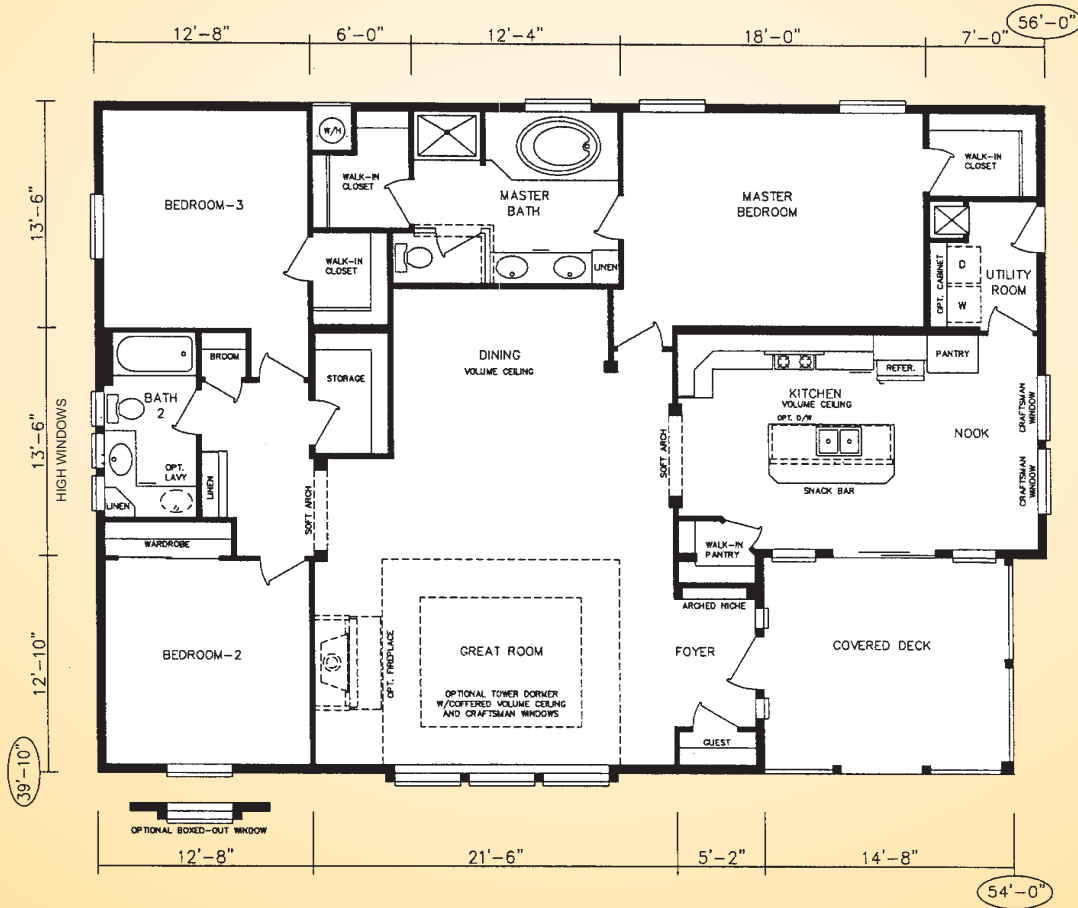
3 Bedrooms
2 Bathrooms
2017 Sq. Ft.
2205 with Covered Porch



Optional Tower Dormer with Craftsman Windows



Optional



Standard Specifications

Construction

- ▲ 2x6 16" O.C. Exterior Wall Framing with Laminated Timber Headers
- ▲ 2x6 Transverse Joists on 16" Centers
- ▲ 5/8" Floor Decking
- ▲ Truss-type Rafters with Vented Attic
- ▲ 5/8" Fire Rated Drywall Ceilings
- ▲ 20 lb. Roof Load
- ▲ White Vinyl Low E² Windows
- ▲ Large Windows Allow Plentiful Light and Ventilation with Grid Stack Windows (per plan)
- ▲ INSULATION VALUES ZONE II
 - ▲ Ceiling Area, R-22 Insulation
 - ▲ Exterior Walls, R-19 Fiberglass Insulation
 - ▲ Floor, R-11 Fiberglass Insulation
- ▲ Built to Meet or Exceed H.U.D. Code Standards
- ▲ "Silver Shield" 7-Year Warranty Protection

Exterior

- ▲ Semi-Gloss 2 or 3 Color Exterior Paint
- ▲ Class "A" Fire Rated Composition Roofing with 20-Year Manufacturer's Limited Warranty
- ▲ 2 GFI-Protected Exterior Receptacles
- ▲ 6-Panel Metal Insulated Front Entry Door
- ▲ Eaves:
 - 12" on 12"10" Home Sections
 - 4" on 13'6" Home Sections
- ▲ Window Box Treatment Per Plan
- ▲ Extended Gable over Window Box Treatment
- ▲ "Cemplank" Fiber-Cement Siding
- ▲ Skid Resistant Recessed Entries
- ▲ Easy Care Composite Decking on Covered Deck

Appliances

- ▲ White 30" Gas Freestanding Range, Digital Clock, Preview Window, Pilotless Ignition

- ▲ 18 Cubic Foot Frost Free Refrigerator
- ▲ Built-In Dishwasher
- ▲ 30-gallon Gas Water Heater with Drain Pan and Earthquake Bracing

Utilities

- ▲ Water Shutoff Valves at Sinks and Toilets
- ▲ Water Supply Lines Routed From Walls
- ▲ Freezer Space with Receptacle (per plan)
- ▲ 100 amp Electrical Panel
- ▲ Flow Guard Gold Water Lines

Interior

- ▲ Vaulted Ceilings Complimented with High, Flat Ceilings in Center Sections of Triple Wides (per plan)
- ▲ Elegant Arched Passageways per plan
- ▲ 30" Raised Panel Passage Doors and Wardrobe Doors
- ▲ Double Pole Wardrobes
- ▲ Arched Feature Wall Niche per plan
- ▲ Drywall Corners are Rounded Except Windows
- ▲ Mohawk™ "Builders' Choice," FHA Approved Group 2 in All Areas Except Kitchen, Baths, and Utility Rooms.
- ▲ Sculptured Baseboards and Door Casings
- ▲ Designer Drapery Package
- ▲ Interior lined Cabinetry and Drawers.
- ▲ Metal Mini-blinds throughout Except Baths
- ▲ Sculptured Base Boards and Door Casings

Kitchen

- ▲ Moen Faucets in Kitchen and Baths Feature Lifetime Limited Warranty Against Leaks and Drips.
- ▲ Custom Drawers Over Doors Cabinet Design
- ▲ Adjustable Shelves in Most Overhead Cabinets
- ▲ Stainless Steel Sink
- ▲ Raised-Panel Pre-finished Cabinetry with Crown

Moulding Accents on Overhead Cabinets

- ▲ Over 30 Countertop Selections
- ▲ Gourmet Kitchen Option [see photos]

Baths

- ▲ Oval Drop in Tub and 48" Shower
- ▲ Self Rimming China Sinks
- ▲ Moen Faucets - Chrome Finish
- ▲ Bank of Drawers in Master Bath
- ▲ Built in Medicine Cabinets in Both Baths
- ▲ Vented Exhaust Fan in All Baths
- ▲ Heat Registers Located in Toe-Kick Areas of Kitchen and Baths
- ▲ "Artisan" Optional Master Bath [see photos]



"Smart Choice" Options

- ▲ Metlund on D'mand Hot Water Recirculation System (Saves Water and Energy)
- ▲ Tubular Skylights (Saves Energy)
- ▲ Tech Shield - Radiant Barrier Roof Sheathing
- ▲ Tankless Water Heater
- ▲ Moisture Barrier House Wrap

The "SilverShield"

7 Years of Coverage on Over 40 Items

Silvercrest is proud of the quality we build into every home, and we put that in writing with an included 7-year limited warranty. Coverage for originally installed or included systems and appliances from Silvercrest or the retailer is included in the price of your home.* If you were to buy extended service contracts for all of these items individually, you could spend hundreds of dollars extra for the same protection you receive with the Silvercrest "SilverShield."



* Deductibles Apply

For More Information on the "SilverShield" Program Ask Your Retailer or Visit Our Website at www.silvercrest.com

Manufacturer's Notes: Due to our continuing program of product improvements and federal code requirements, specifications and prices are subject to change without notice. Silvercrest Western Homes Corporation reserves the right to improve models without incorporating these changes in similar models at an earlier date. Dimensions shown and square footage are approximate. Illustrations are artist's concepts.