



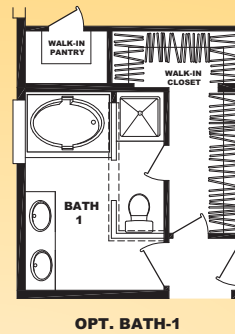
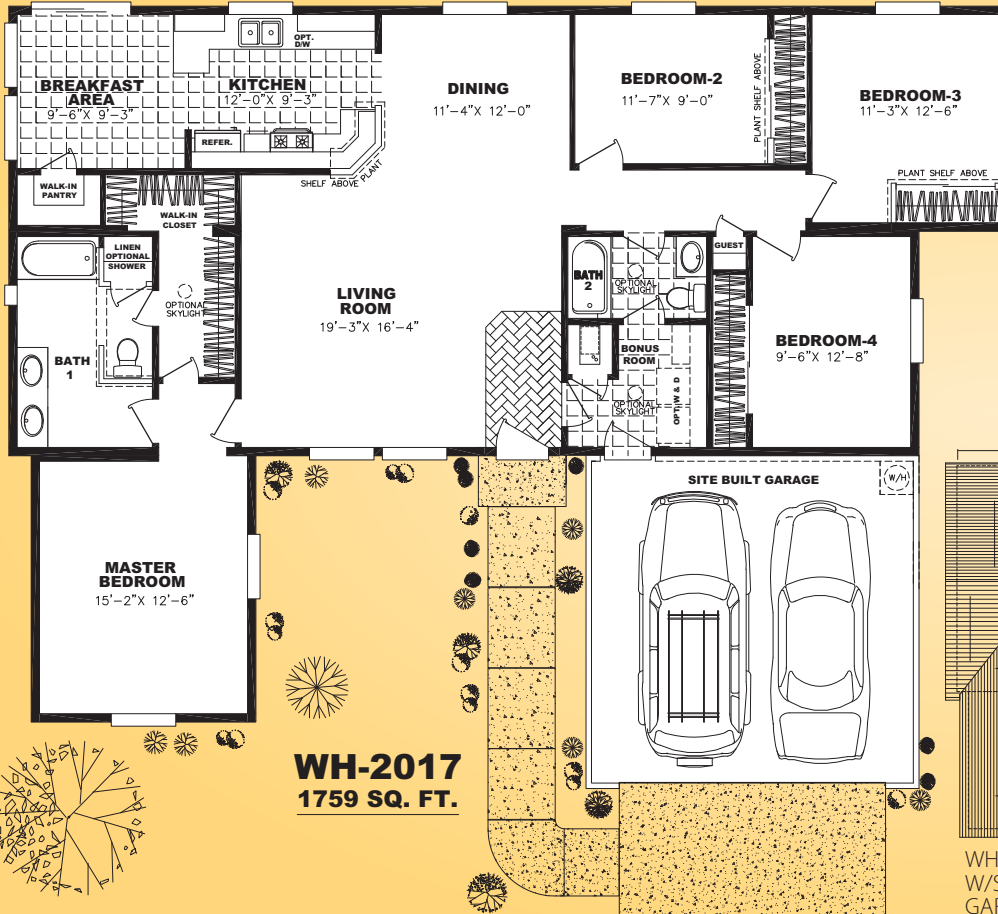
OPTIONAL ELEVATION A - STANDARD 4:12 ROOF



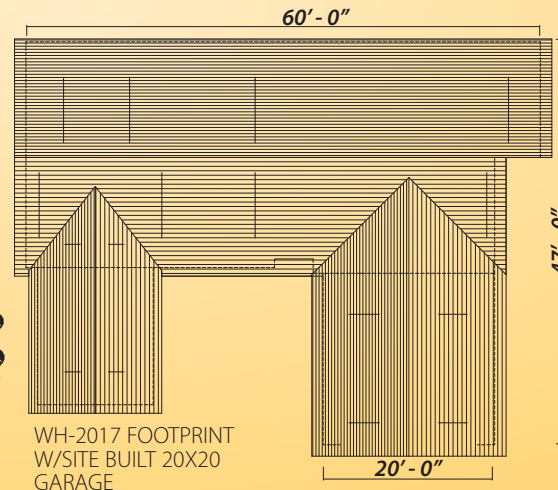
OPTIONAL STUCCO ELEVATION B - OPTIONAL 6:12 ROOF



OPTIONAL ELEVATION C - OPTIONAL 6:12 ROOF



OPT. BATH-1



WH-2017 FOOTPRINT  
W/SITE BUILT 20X20  
GARAGE

# Factory Built Homes





# WESTERN HOMES CORPORATION

## FBH WH-1000/2000 Standard Specifications

### Structural

- ▲ Corona Division - "Super Floor" All Steel Framed Floor with 1-1/8" T&G OSB Floor Decking (No Low Boy Required for Transport to Site)
- ▲ Woodland Division - 2x10 Wood Framed Floor with Steel Perimeter, 3/4" T&G OSB Floor Decking
- ▲ 2x6 or 3x6 Exterior Wall Studs, 16" O.C. with Double Top Plate
- ▲ Interior Walls to be 2x4
- ▲ Concealed Interior Ridge Beam
- ▲ 4:12 Roof Pitch (Partial Site Installation Required on 3 and 4-Section Homes)
- ▲ Insulation - R-22 Fiberglass Blanket in Floor, R-21 Fiberglass Batt in Exterior Walls and R-38 Blown in Cellulose in Roof
- ▲ Roof Loads: 35# Dead Load (Tile Ready)/20# Live Load (Increased Snow Loads Available)
- ▲ 8' Exterior Side Wall Height with Cathedral Ceilings T/O

### Exterior

- ▲ Garages, Dormers, Tile Roofs, Exterior Siding Treatments and Stucco Shown on Renderings are Installed on Site by Contractor (Not Supplied by Western Homes Corporation [WHC] OSB-STD)
- ▲ 1/2" Roof Sheathing with Aluminum Foil Radiant Barrier Covered with Plastic for Temporary Weather Protection
- ▲ 16" Fixed Eaves and Overhangs

### Doors and Windows

- ▲ White Vinyl Frame, Dual Glazed, Low E Windows
- ▲ 6-Panel Front Door to Site Built Garage Area (Per Plan)
- ▲ Deadbolts and "Lever" Style Locksets
- ▲ Raised Panel Hollowcore Passage Doors with Factory Selected Door Knobs
- ▲ Raised Panel Hollowcore Wardrobe Doors
- ▲ Sculptured Profile Door and Window Casing Throughout

### Kitchen and Appliances

- ▲ Natural Hardwood Face Frames and Cabinet Doors
- ▲ Drawer Over Door Cabinet System
- ▲ Concealed, Self-Closing, Cabinet Door Hinges
- ▲ Laminate Countertops with Drop Edge Front and 6" Tile Backsplash
- ▲ Self Rim Stainless Steel Kitchen Sink
- ▲ Moen Chrome Single Lever Kitchen Sink
- ▲ "General Electric" 30" Range
- ▲ 1/3 HP Garbage Disposal

### Heating and Cooling

- ▲ 90% Efficiency Broan Furnace(s) with Set Back Thermostat
- ▲ Fiberglass Heat Ducts 7" x 16"

### Plumbing

- ▲ (2) Exterior Hose Bibs
- ▲ Water Heater Not Provided (Plumb Only)
- ▲ Standard Copper Water Pipe and Fittings (Pex or Other Material By City/County Approval Only)
- ▲ Shut Off Valves at all Sink Faucets and Toilets
- ▲ Hot & Cold Air Hammer at Clothes Washing Machine, Dishwasher, & Refrigerator with Icemaker
- ▲ Plumbing for Washer
- ▲ Either Plumbing for Gas or Wiring for Electric Dryer and Vent Through Floor
- ▲ Waste System Below Floor Line Not Supplied by Western Homes Corporation (WHC)

### Electrical

- ▲ 50 AMP Air Conditioning Circuit(s) with Disconnects at Condenser Location(s)
- ▲ 100 AMP Main Panel Located in Bonus Room or Per Plan

### Bathrooms

- ▲ Natural Hardwood Face Frames and Cabinet Doors
- ▲ Concealed, Self-Closing Cabinet Door Hinges
- ▲ Tub/Shower Combo (Both Bathrooms)
- ▲ 60" Drop-In Tub, with Clear Window Above in Master Bath (Optional Per Plan)
- ▲ China Self Rimming Lavy Sinks
- ▲ Moen Single Lever, Chrome Lavy Faucets with Pop-Up
- ▲ Double Bowl Lavy's in Master Bath (Per Plan)
- ▲ Beveled Edge Mirror Medicine Cabinet in Baths
- ▲ Elongated Toilets

### Interior

- ▲ 5/8" Type X Fire Rated Sheetrock on Ceiling with Knockdown Textured Finish
- ▲ Round Drywall Corners on all Walls
- ▲ Sculptured Profile Baseboard Molding Throughout
- ▲ Vinyl Floor Covering in Kitchen, Utility/Bonus and Guest Baths
- ▲ Vinyl Floor Covering in Entry
- ▲ FHA Approved Carpet in Living, Dining, Family, Bedrooms, Master Bath, and Halls

### Lighting

- ▲ Chandelier with Dimmer Switch
- ▲ Kitchen with Fluorescent Ceiling Can Lights (Per Plan)
- ▲ Morning Room/Breakfast Area, Ceiling Fan/Light with Dimmer Switch (Per Plan)
- ▲ Bonus/Utility Room with Fluorescent Ceiling Can Lights
- ▲ Walk-In Pantry with Fluorescent Ceiling Can Light

**Note:** These homes are built to the 2007 California Building Code and the 2005 California Energy Code.

### Options Available:

- ▲ 6:12 Roof Pitch (Partial Site Install Required) with 9' Flat Ceilings Throughout (Available on Plans 1004, 1008, 1027, 2017 Only)
- ▲ Select Plans Available with Exposed Rafter Tail Eaves with 6:12 Roof Option
- ▲ Exterior Siding Treatments - See Elevations Above

### MEMBER



299 North Smith Avenue • P.O. Box 759  
Corona, CA 92878-0759  
909/734-6610 • 800/382-0709

109 Pioneer Avenue  
Woodland, CA 95776  
530/662-9156 • 800/264-0010

### Manufacturer's Notes

Due to our continuing program of product improvement and federal code requirements, specifications and prices are subject to change without notice. Western Homes Corporation reserves the right to improve models without incorporating these changes in similar models produced at an earlier date. Dimensions shown and square footage are approximate. Illustrations are artist's concepts. Specifications may vary from state to state. Contact the facility nearest you for local requirements.